

## Pearmtree Hill Solar Farm

### Environmental Statement

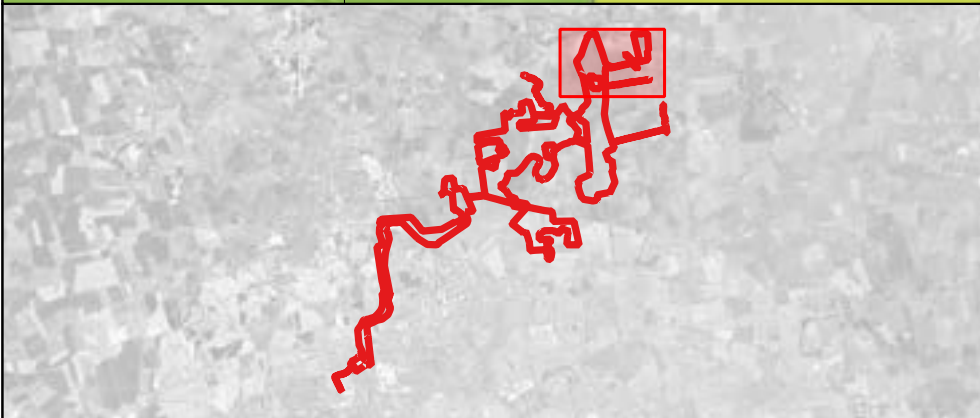
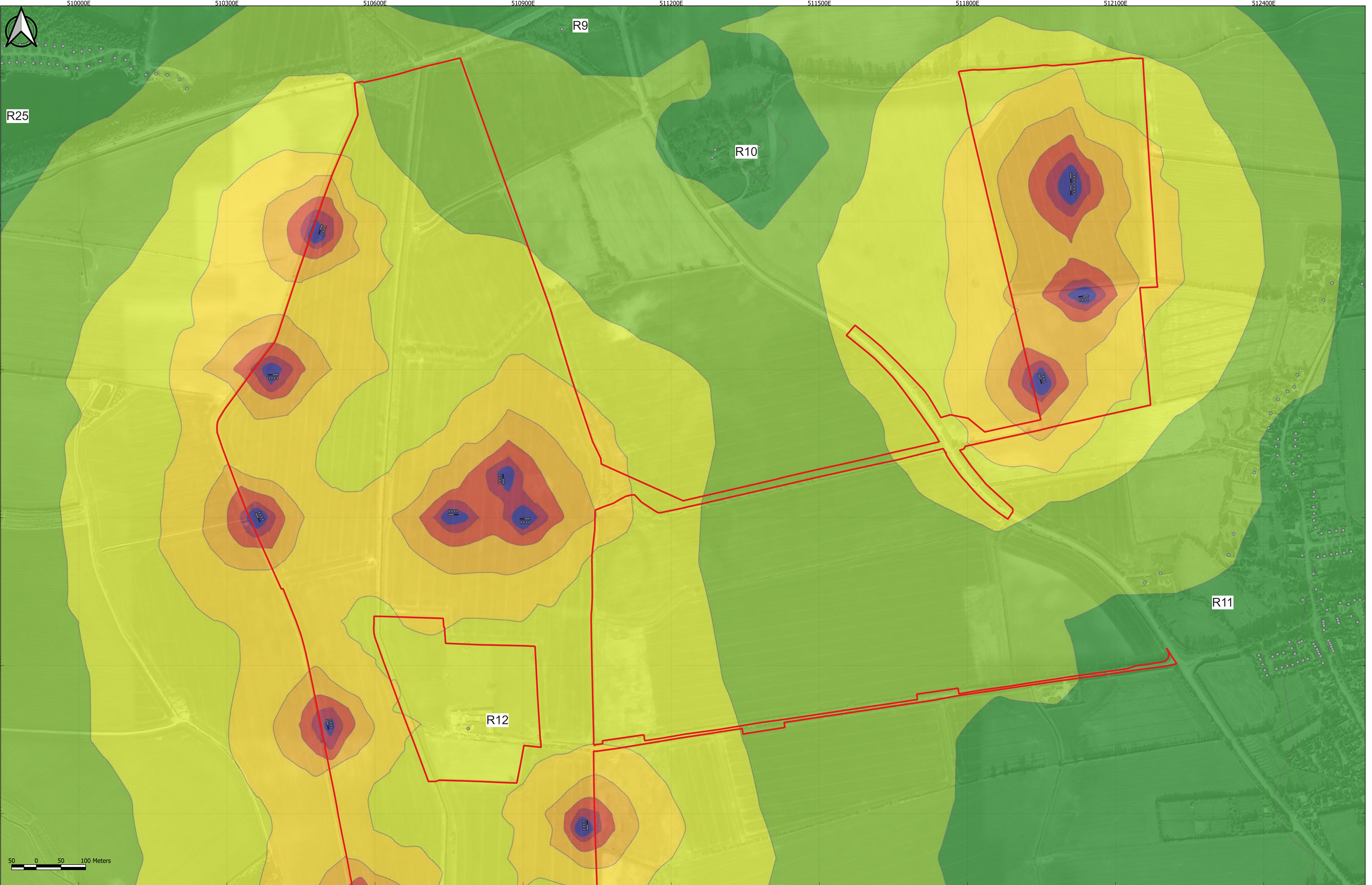
#### Volume 3

#### Figure 12.5: Operational Noise Contours – Unmitigated, Daytime, Ground Floor

Application Document Ref: EN010157/APP/6.3  
February 2025

Planning Act 2008  
Infrastructure Planning  
(Applications: Prescribed Forms  
and Procedure) Regulations 2009 –  
Regulation 5(2)(a)





**Key**

- Order Limits
- Noise source
- Sensitive receptor
- R Receptor Label

**Specific Sound Level, dB LAS, T**

<30	45-50
30-35	50-55
35-40	55-60
40-45	>60

**Notes:**

Document reference: EN010157/APP/6.3.

Sheet 1 shows Fields B1-B4 and the surrounding area.

Items listed as "noise source" on the drawing refer to all fixed plant during the assessment scenario in question, to include both hybrid packs and substations.

P02	19/01/2025	DV	JM	BT	MM
P01	03/12/2024	DV	JM	BT	MM
App	Date	By	Chkd	Appd	Authd

Client

**RWE**

Designer

**RSK**

Project Name

Peartree Hill Solar Farm

Drawing Title

Environmental Statement Volume 3, Figure 12.5: Operational noise contours – unmitigated, daytime, ground floor

Scale at A1

1:3500

Status

DCO Application

PINS Number

EN010157

Rev

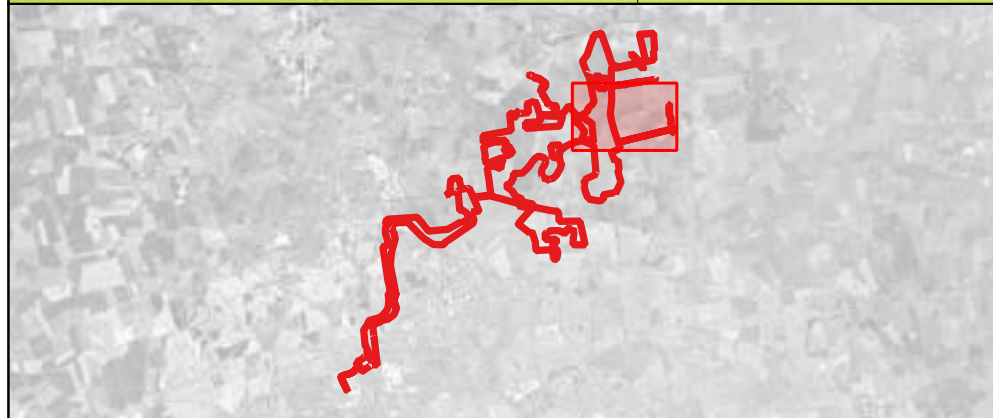
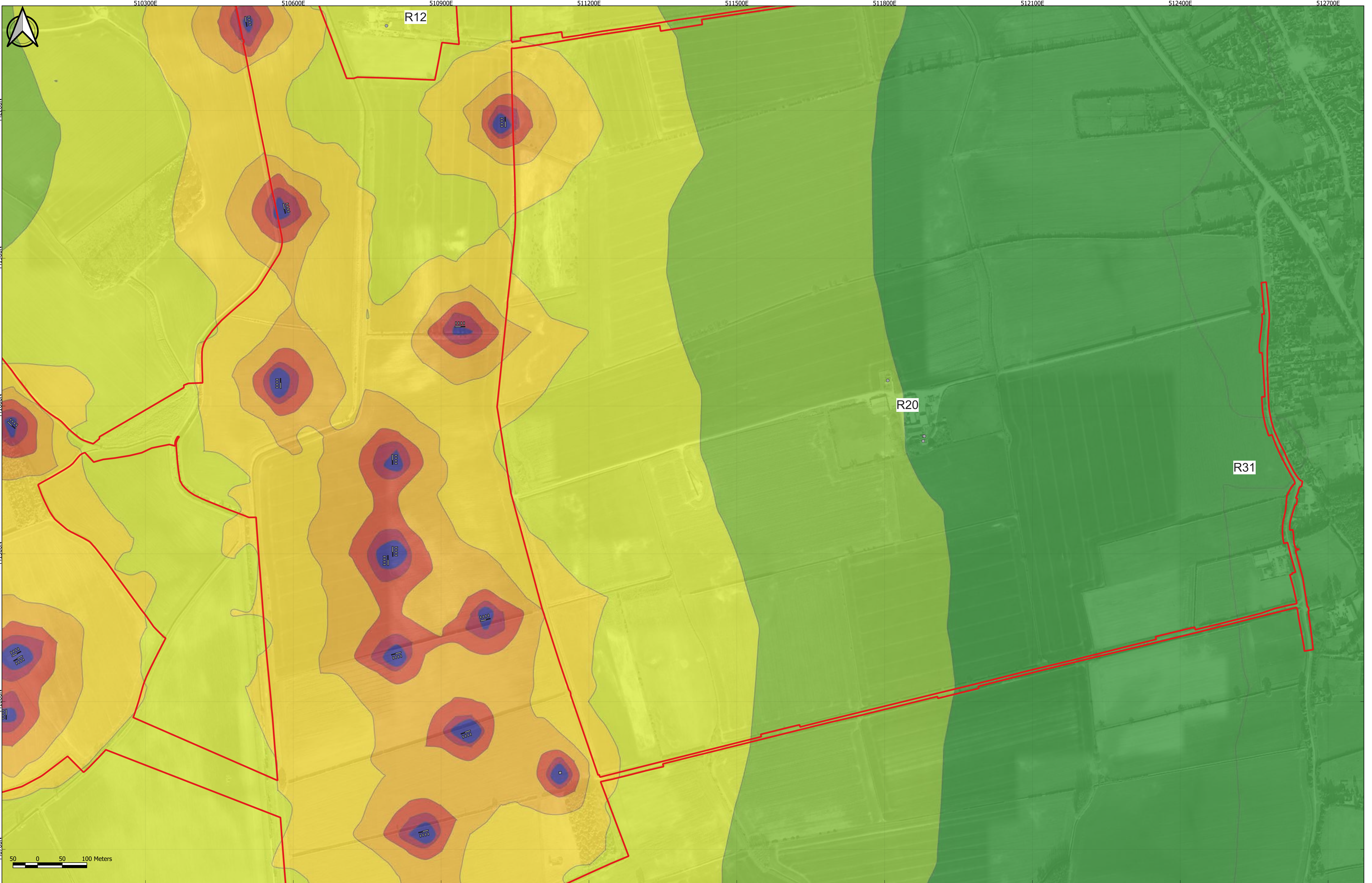
P01

Coordinate System:

British National Grid

SHEET 1 OF 8





**Key**

- Order Limits
- Noise source
- Sensitive receptor
- R Receptor Label

**Specific Sound Level, dB LAS, T**

<30	45-50
30-35	50-55
35-40	55-60
40-45	>60

**Notes:**

Document reference: EN010157/APP/6.3.

Sheet 2 shows Fields B7-B8 & C1-C3 and the surrounding area.

Items listed as "noise source" on the drawing refer to all fixed plant during the assessment scenario in question, to include both hybrid packs and substations.

P02	19/01/2025	DV	JM	BT	MM
P01	03/12/2024	DV	JM	BT	MM
App	Date	By	Chkd	Appd	Authd

Client

**RWE**

Designer

**RSK**

Project Name

Peartree Hill Solar Farm

Drawing Title

Environmental Statement Volume 3, Figure 12.5: Operational noise contours – unmitigated, daytime, ground floor

Scale at A1

1:3500

Status

DCO Application

PINS Number

EN010157

Rev

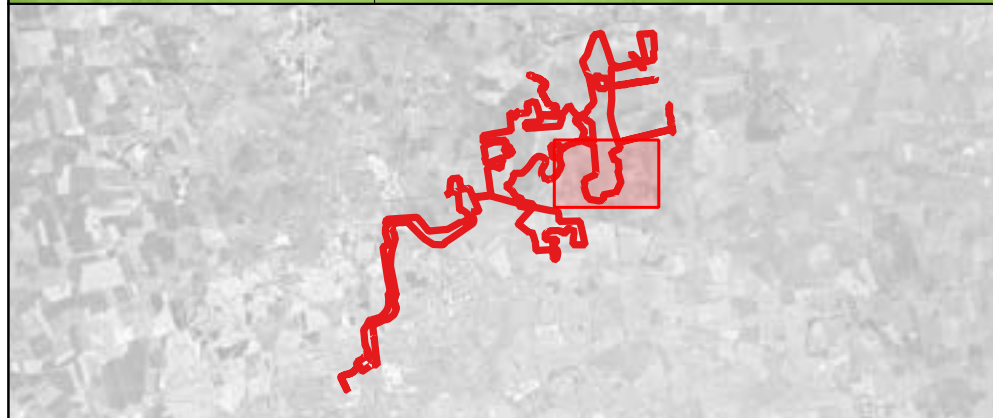
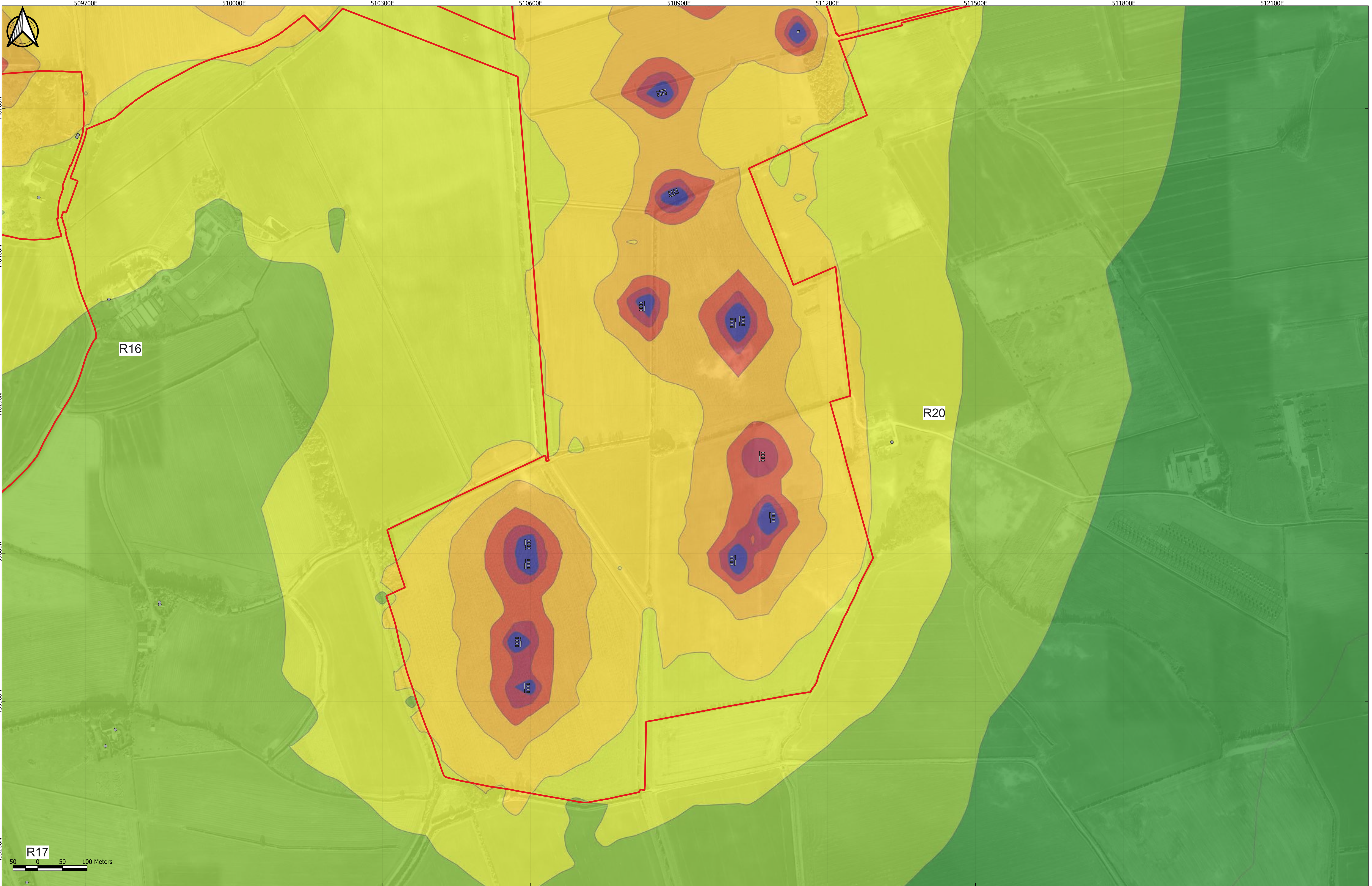
P02

Coordinate System:

British National Grid

SHEET 2 OF 8





**Key**

- Order Limits
- Noise source
- Sensitive receptor
- R Receptor Label

**Specific Sound Level, dB LAS, T**

<30	45-50
30-35	50-55
35-40	55-60
40-45	>60

**Notes:**

Document reference: EN010157/APP/6.3.

Sheet 3 shows Fields C4-C9 and the surrounding area.

Items listed as "noise source" on the drawing refer to all fixed plant during the assessment scenario in question, to include both hybrid packs and substations.

P02	19/01/2025	DV	JM	BT	MM
P01	03/12/2024	DV	JM	BT	MM
App	Date	By	Chkd	Appd	Authd

Client

**RWE**

Designer

**RSK**

Project Name

Peartree Hill Solar Farm

Drawing Title

Environmental Statement Volume 3, Figure 12.5: Operational noise contours – unmitigated, daytime, ground floor

Scale at A1

1:3500

Status

DCO Application

PINS Number

EN010157

Rev

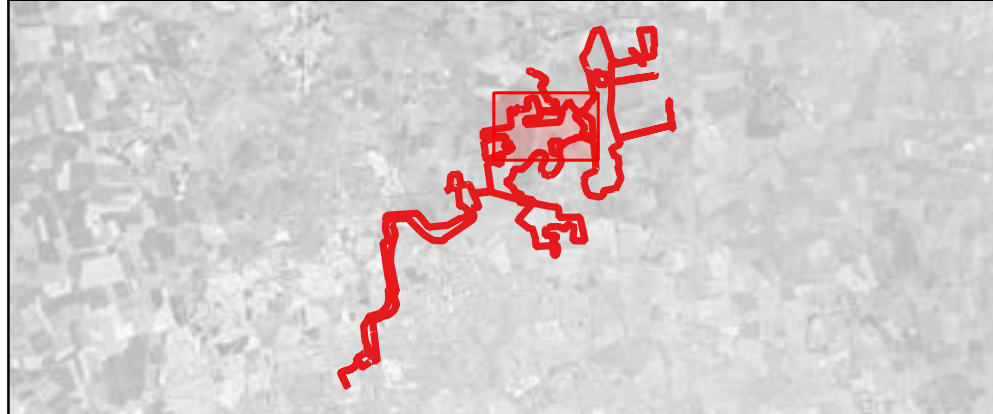
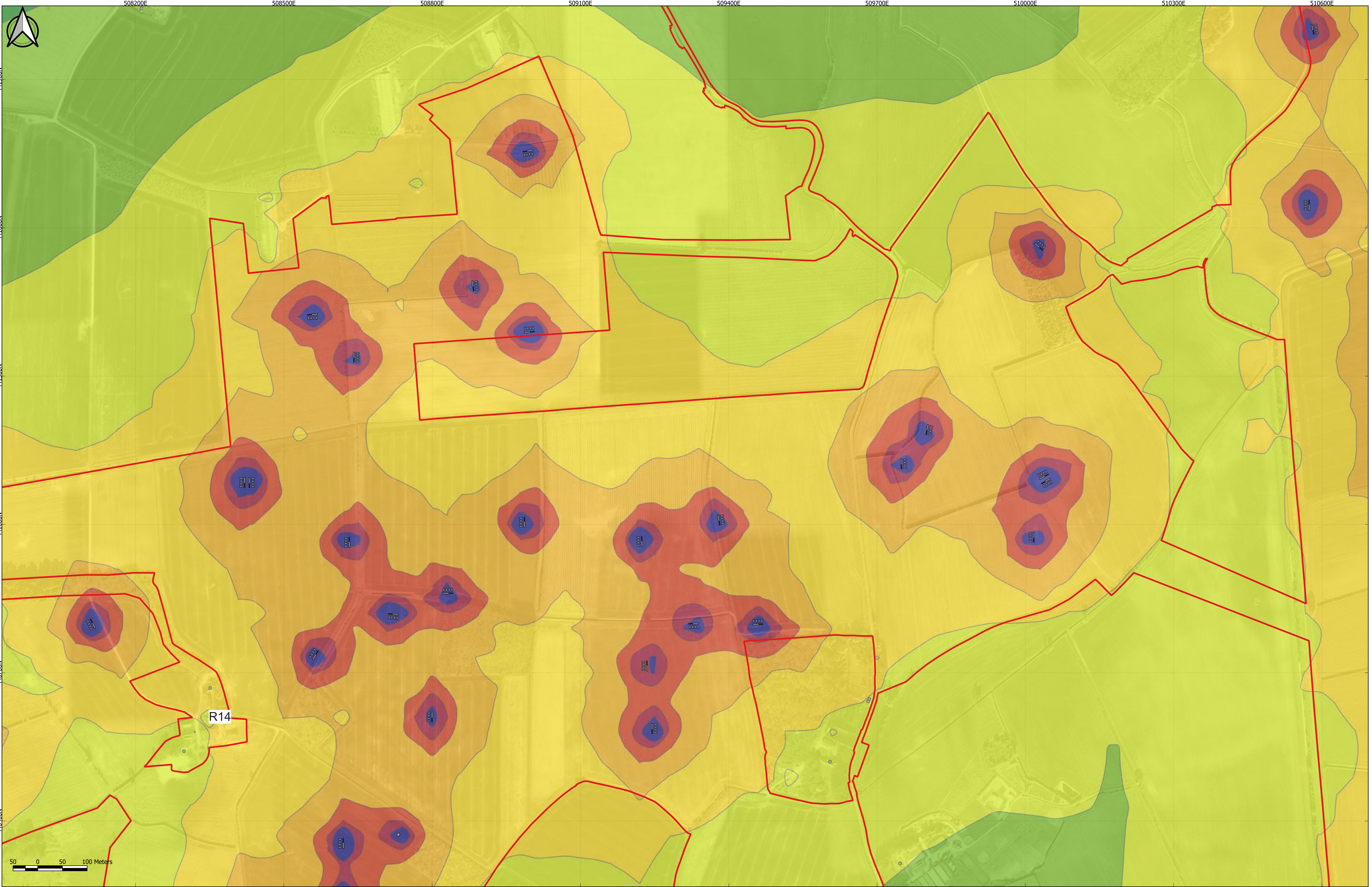
P02

Coordinate System:

British National Grid

SHEET 3 OF 8





**Key**

- Order Limits
- Noise source
  - Sensitive receptor
  - Receptor Label

**Specific Sound Level, dB LAS, T**

<30	45-50
30-35	50-55
35-40	55-60
40-45	>60

**Notes:**

Document reference: EN010157/APP/6.3.

Sheet 4 shows Fields D1-D17 and the surrounding area.

Items listed as "noise source" on the drawing refer to all fixed plant during the assessment scenario in question, to include both hybrid packs and substations.

P02	19/01/2025	DV	JM	BT	MM
P01	03/12/2024	DV	JM	BT	MM
App	Date	By	Chkd	Appd	Authd

Client

**RWE**

Designer

**RSK**

Project Name

Peartree Hill Solar Farm

Drawing Title

Environmental Statement Volume 3, Figure 12.5: Operational noise contours – unmitigated, daytime, ground floor

Scale at A1

1:3500

Status

DCD Application

PINS Number

EN010157

Rev

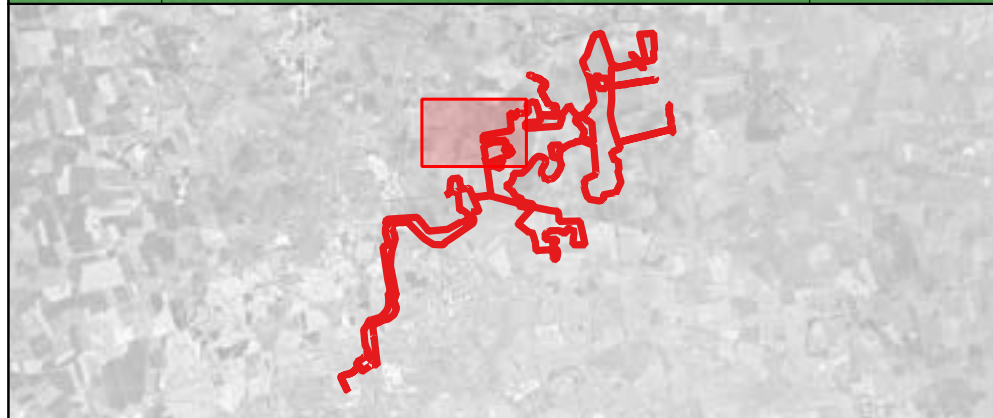
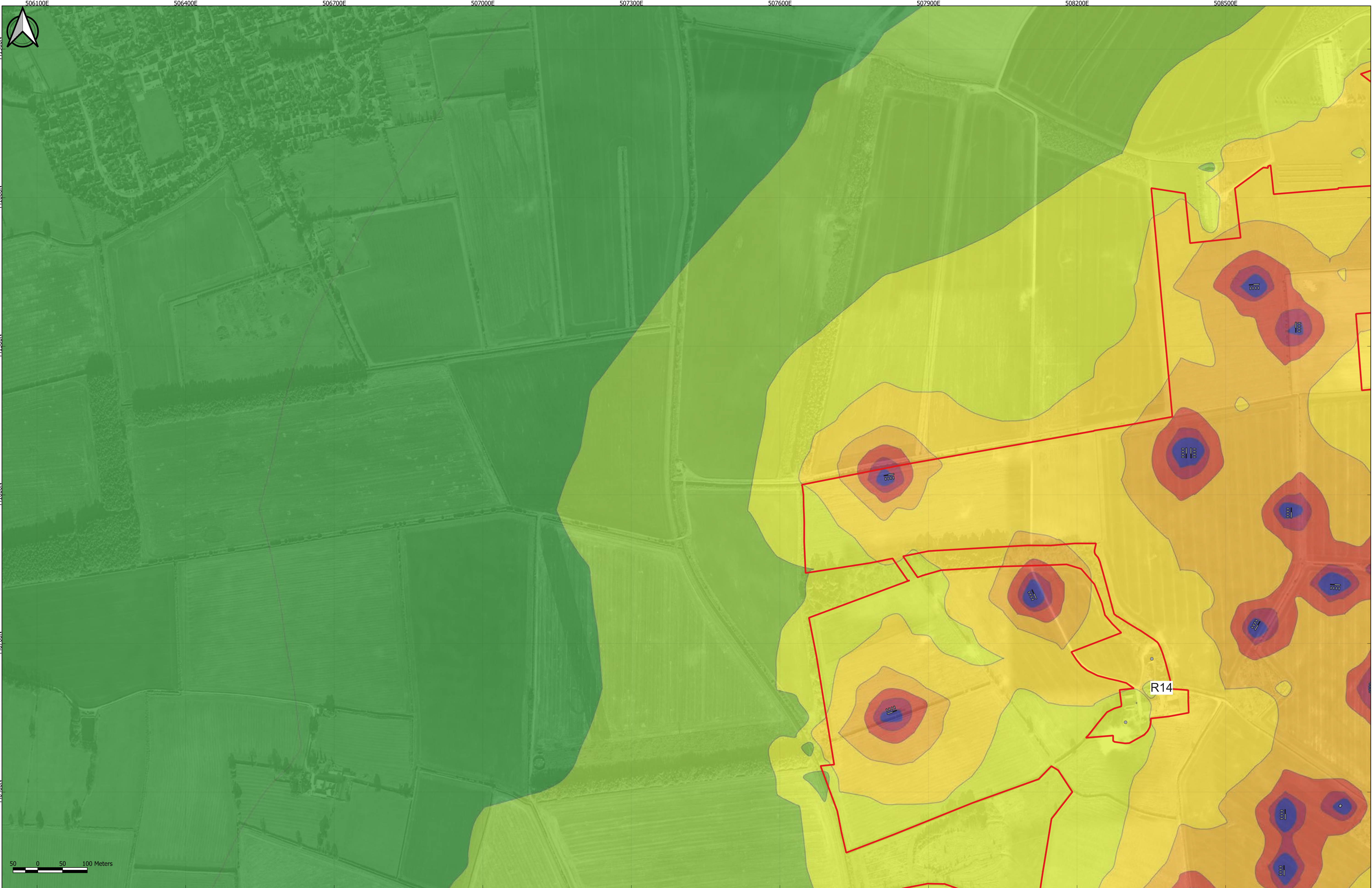
P02

Coordinate System:

British National Grid

SHEET 4 OF 8





**Key**

- Order Limits
- Noise Source
- Sensitive receptor
- R Receptor Label

**Specific Sound Level, dB LAS, T**

<span style="background-color: #2e8b57; width: 15px; height: 10px;"></span> <30	<span style="background-color: #ffcc00; width: 15px; height: 10px;"></span> 45-50
<span style="background-color: #90ee90; width: 15px; height: 10px;"></span> 30-35	<span style="background-color: #ff6600; width: 15px; height: 10px;"></span> 50-55
<span style="background-color: #ffff00; width: 15px; height: 10px;"></span> 35-40	<span style="background-color: #cc0000; width: 15px; height: 10px;"></span> 55-60
<span style="background-color: #ffff99; width: 15px; height: 10px;"></span> 40-45	<span style="background-color: #0000cc; width: 15px; height: 10px;"></span> >60

**Notes:**

Document reference: EN010157/APP/6.3.

Sheet 5 shows Fields D14 & E1-E6 and the surrounding area.

Items listed as "noise source" on the drawing refer to all fixed plant during the assessment scenario in question, to include both hybrid packs and substations.

P02	19/01/2025	DV	JM	BT	MM
P01	03/12/2024	DV	JM	BT	MM
App	Date	By	Chkd	Appd	Authd

Client

**RWE**

Designer

**RSK**

Project Name

Peartree Hill Solar Farm

Drawing Title

Environmental Statement Volume 3, Figure 12.5: Operational noise contours – unmitigated, daytime, ground floor

Scale at A1

1:3500

Coordinate System:

British National Grid

Status

DCO Application

PINS Number

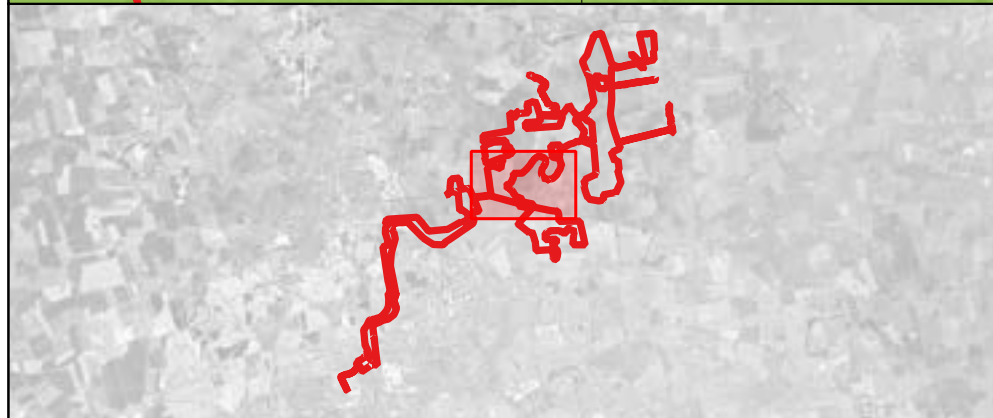
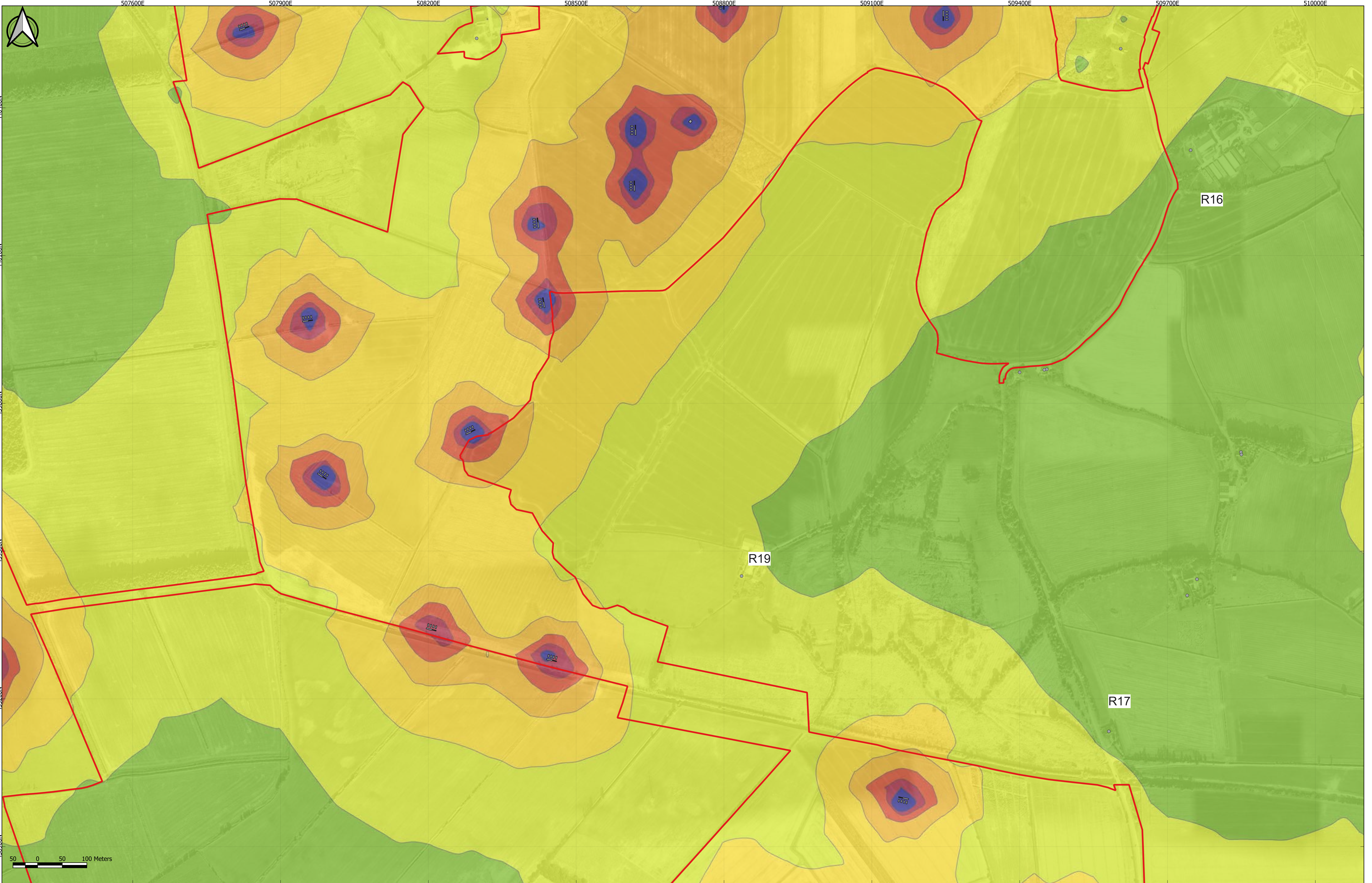
EN010157

Rev

P02

SHEET 5 OF 8





**Key**

- Order Limits
- Noise Source
- Sensitive receptor
- R Receptor Label

**Specific Sound Level, dB LAS, T**

<30	45-50
30-35	50-55
35-40	55-60
40-45	>60

**Notes:**

Document reference: EN010157/APP/6.3.

Sheet 6 shows Fields D16, D18 & E6-E12 and the surrounding area.

Items listed as "noise source" on the drawing refer to all fixed plant during the assessment scenario in question, to include both hybrid packs and substations.

P02	19/01/2025	DV	JM	BT	MM
P01	03/12/2024	DV	JM	BT	MM
App	Date	By	Chkd	Appd	Authd

Client

**RWE**

Designer

**RSK**

Project Name

Peartree Hill Solar Farm

Drawing Title

Environmental Statement Volume 3, Figure 12.5: Operational noise contours – unmitigated, daytime, ground floor

Scale at A1

1:3500

Status

DCO Application

PINS Number

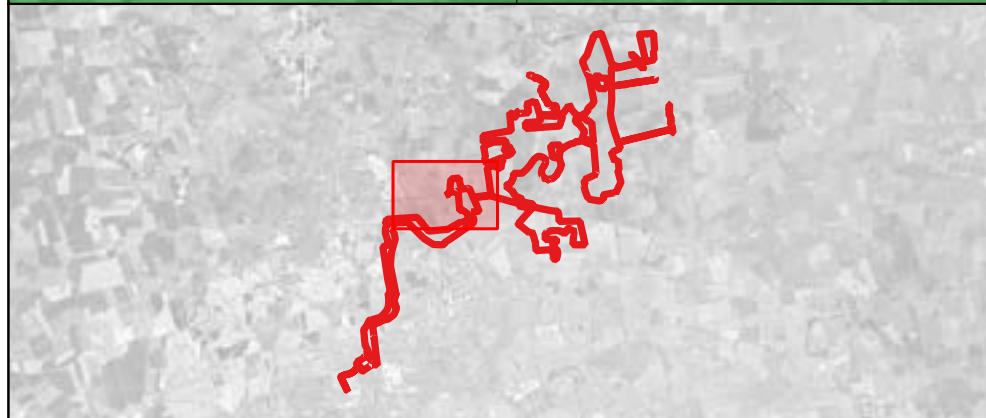
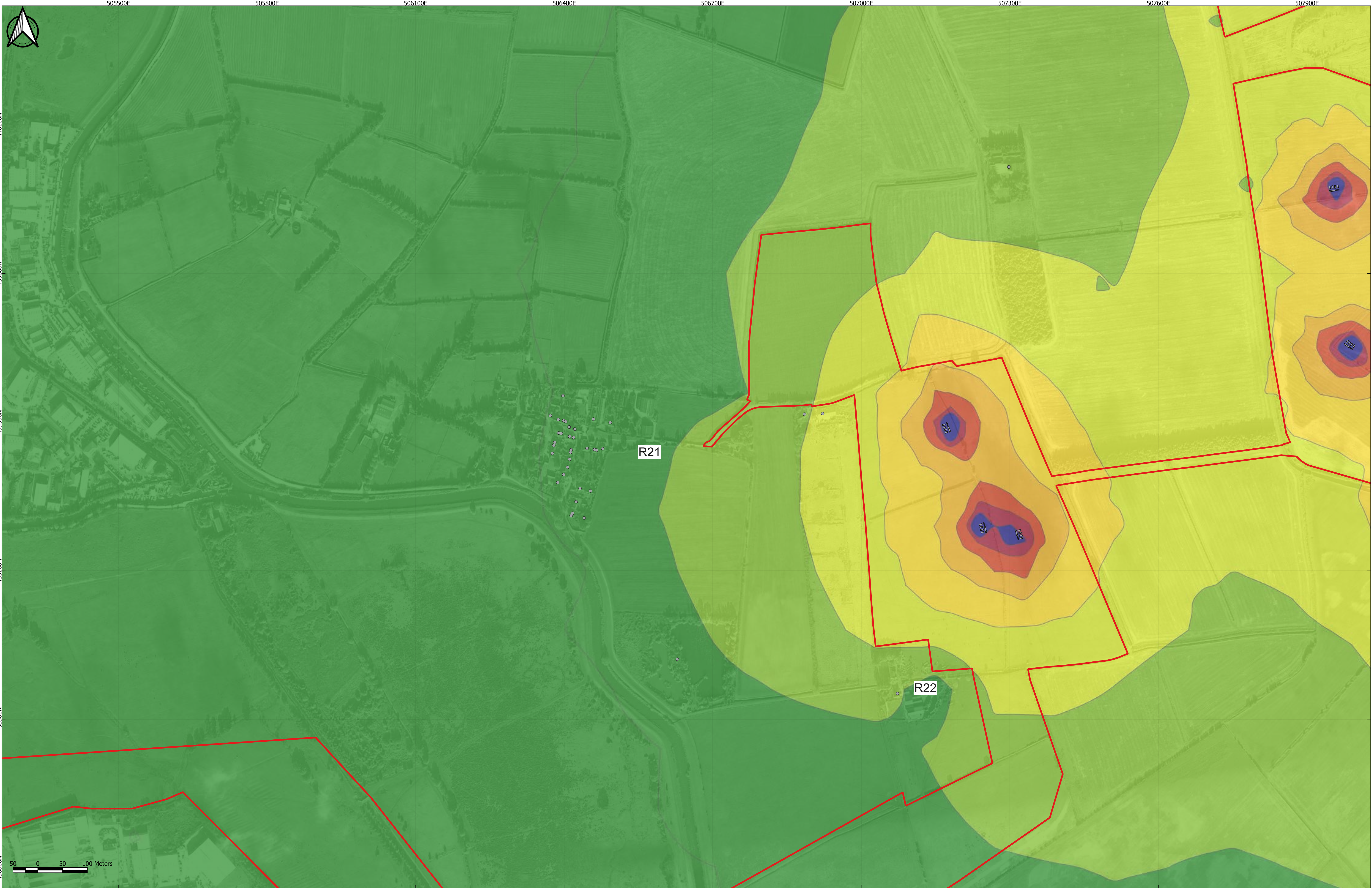
EN010157

Rev

P02

SHEET 6 OF 8





**Key**

- Order Limits
- Noise Source
- Sensitive receptor
- R Receptor Label

**Specific Sound Level, dB LAS, T**

<30	45-50
30-35	50-55
35-40	55-60
40-45	>60

**Notes:**

Document reference: EN010157/APP/6.3.

Sheet 7 shows Fields E13-E17 and the surrounding area.

Items listed as "noise source" on the drawing refer to all fixed plant during the assessment scenario in question, to include both hybrid packs and substations.

P02	19/01/2025	DV	JM	BT	MM
P01	03/12/2024	DV	JM	BT	MM
App	Date	By	Chkd	Appd	Authd

Client

**RWE**

Designer

**RSK**

Project Name

Peartree Hill Solar Farm

Drawing Title

Environmental Statement Volume 3, Figure 12.5: Operational noise contours – unmitigated, daytime, ground floor

Scale at A1

1:3500

Status

DCO Application

Title

PINS Number

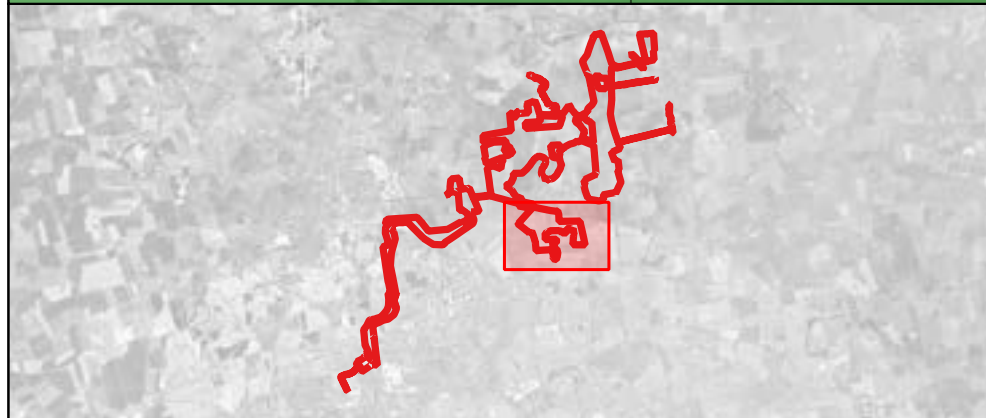
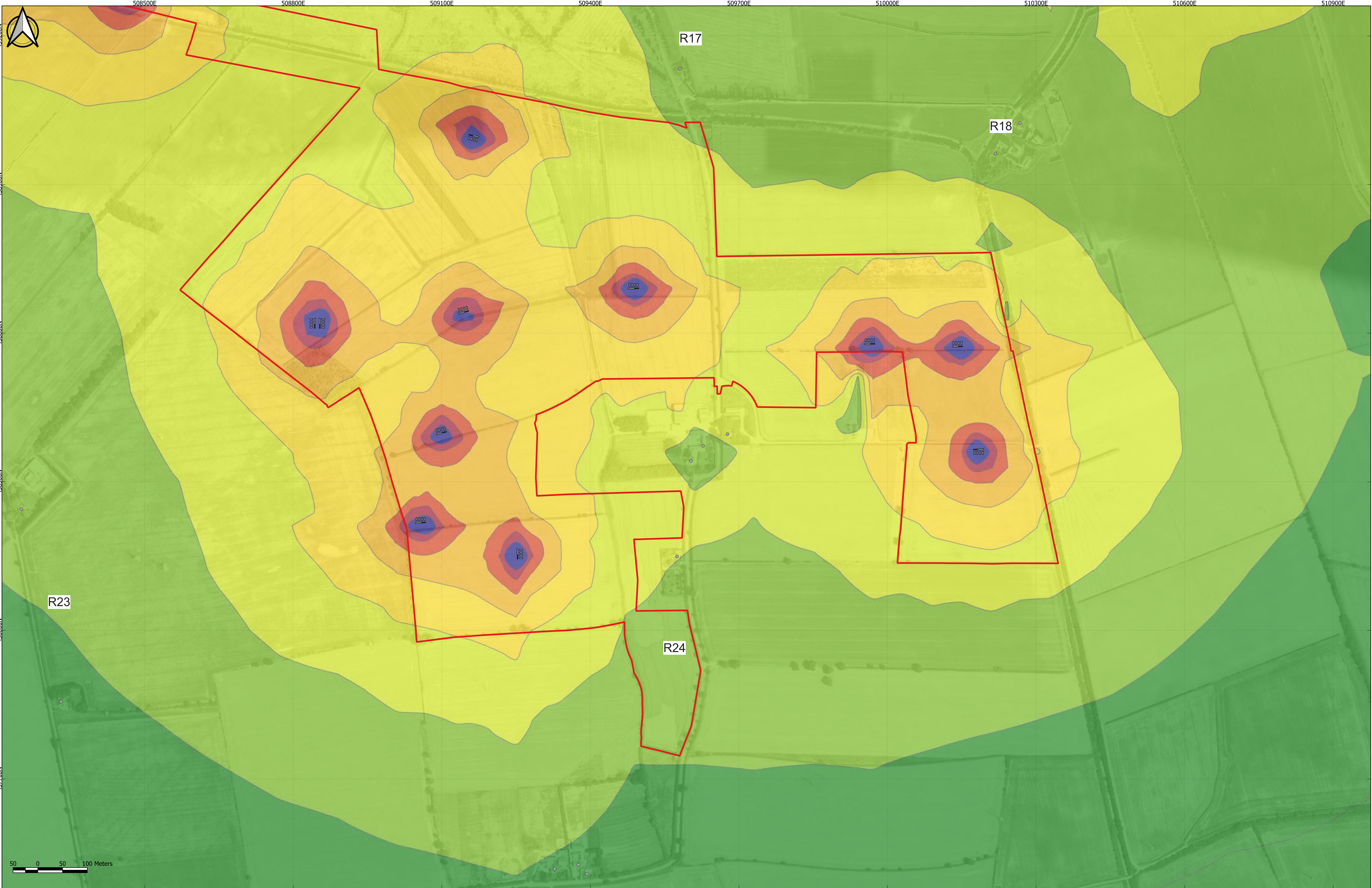
EN010157

Rev

P02

SHEET 7 OF 8





**Key**

- Order Limits
- Noise Source
- Sensitive receptor
- R Receptor Label

**Specific Sound Level, dB LAS, T**

<30	45-50
30-35	50-55
35-40	55-60
40-45	>60

**Notes:**

Document reference: EN010157/APP/6.3

Sheet 8 shows Fields F1-F17 and the surrounding area

Items listed as "noise source" on the drawing refer to all fixed plant during the assessment scenario in question, to include both hybrid packs and substations.

P02	19/01/2025	DV	JM	BT	MM
P01	03/12/2024	DV	JM	BT	MM
App	Date	By	Chkd	Appd	Authd

Client

**RWE**

Designer

**RSK**

Project Name

Peartree Hill Solar Farm

Drawing Title

Environmental Statement Volume 3, Figure 12.5: Operational noise contours – unmitigated, daytime, ground floor

Scale at A1

1:3500

Status

DCO Application

PINS Number

EN010157

Rev

P02

SHEET 8 OF 8



**RWE Renewables UK Limited**

Windmill Hill Business Park,  
Whitehill Way,  
Swindon,  
Wiltshire,  
England,  
SN5 6PB  
[www.rwe.com](http://www.rwe.com)